



香港青少年服務處

HONG KONG CHILDREN & YOUTH SERVICES

紅磡綜合家庭服務中心

HUNG HOM INTEGRATED FAMILY SERVICE CENTRE



社會福利署資助服務

Subsidised Service by
the Social Welfare Department

Opening Hours

Mon Tue Wed Thu Fri Sat

9:00am-1:00pm



2:00pm-5:30pm



5:30pm-8:00pm



 opens on the first Saturday of every month



Hong Kong Children & Youth Services
Hung Hom Integrated Family Service Centre

Address

Upper G/F, Hung Fai House,
Hung Hom Estate, Kowloon

Tel. No.

2761-1106

Fax No.

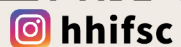
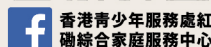
2715-4033

E-mail

hhc@hkcsy.org.hk

Newsletter and Information

Service unit will publish newsletter on regular basis for distribution. Please visit our web-site <http://www.cys.org.hk>, and visit our Facebook page or Instagram for most updated information.





香港青少年服務處
HONG KONG CHILDREN & YOUTH SERVICES
紅磡綜合家庭服務中心
HUNG HOM INTEGRATED FAMILY SERVICE CENTRE

Opening Hours

Mon Tue Wed Thu Fri Sat

| | | | | | | |
|---------------|---|---|---|---|---|---|
| 9:00am-1:00pm | ◆ | ◆ | ◆ | ◆ | ◆ | ◆ |
| 2:00pm-5:30pm | ◆ | ◆ | ◆ | ◆ | ◆ | 😊 |
| 5:30pm-8:00pm | | ◆ | | | ◆ | |

😊 opens on the first Saturday of every month



Hong Kong Children & Youth Services
Hung Hom Integrated Family Service Centre

Address

Upper G/F, Hung Fai House,
Hung Hom Estate, Kowloon

Tel. No.

2761-1106

Fax No.

2715-4033

E-mail

hhc@hkcs.org.hk

Newsletter and Information

Service unit will publish newsletter on regular basis for distribution. Please visit our web-site <http://www.cys.org.hk>, and visit our Facebook page or Instagram for most updated information.



香港青少年服務處紅磡綜合家庭服務中心



hhifsc



社會福利署資助服務
Subsidised Service by
the Social Welfare Department



Introduction

Hong Kong Children and Youth Services was established in 1978 and is a diversified social service organization. We provide a wide range of services across various districts in Hong Kong, including center-based services, outreach and home care services, school support, and residential care services, catering to the diverse needs of children, youth, families, and the elderly.

We uphold a user-oriented approach, dedicated to serving the community with professionalism and commitment. We continuously strive for excellence and innovation, collaborating with stakeholders to build an inclusive and sustainable environment that enhances family functioning and fosters individuals to develop their full potential, while collectively making significant contributions to society.

Purpose and Objectives of Service

Scope of Service



Family Resource Unit
 Consultation, resource corner, volunteer training, educational group and programme

Family Support Unit
 Support group, mutual help group, family education service

Family Counselling Unit
 Individual and family counselling, therapeutic group

Service Principles

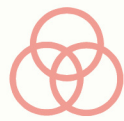


Accessibility

Providing one-stop localized centre services to foster accessibility and convenience for the families in need.

Early Identification

By the initiative to contact, outreach strategies, wide publicity and use of the assessment tools, to identify individuals and families in need as soon as possible.



Service Integration

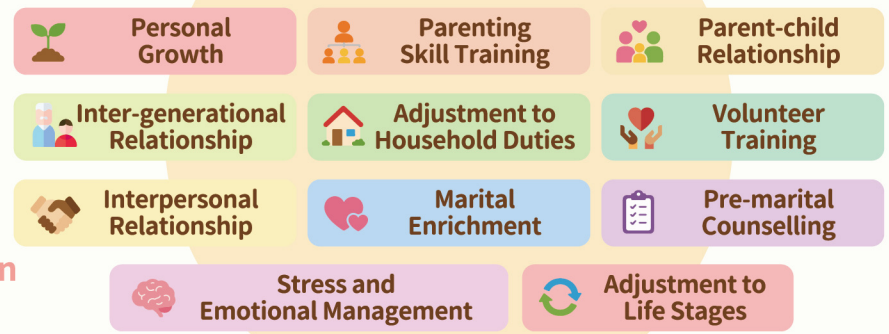
Integrate family service and other services to provide more comprehensive and high-quality services for the families.



Partnership

Partnership with community organizations through outreaching and networking in order to use and access the resources more efficiently for the family.

Content of Services



Target Group of Service

Individual and families residing within the service boundary of Hok Yuen, Whampoa East, Whampoa West, Hunghom Bay, Hunghom, and Ka Wai.



Casework Service / Consultation

Free

Group / Programme

Upon individual group / programme

Service Fee

Procedures of Application and Withdrawal

Service user or his/her family members, relatives or friends can approach our center either through letter, phone call or drop-in to apply for our service. Other helping professions or referrers are welcome to refer users for our follow up service through phone contact or written referral. If service user intends to withdraw from our service, he/she can make such request to his/her respective social worker for service arrangement.