

機構簡介 INTRODUCTION

香港青少年服務處成立於1978年，是一間多元化的社會服務機構，在全港多區提供中心服務、到戶服務、學校支援及住宿服務，以滿足兒童、青少年、家庭及長者的不同需求。我們秉持以用者為本的理念，致力以專業精神和承擔的態度服務社群，並持續追求卓越與創新，與持份者攜手共建關愛、和諧及可持續的環境，提升家庭功能，促進個人潛能發展，為社會作出貢獻。

Hong Kong Children and Youth Services was established in 1978 and is a diversified social service organization. We provide a wide range of services across various districts in Hong Kong, including center-based services, outreach and home care services, school support, and residential care services, catering to the diverse needs of children, youth, families, and the elderly. We uphold a user-oriented approach, dedicated to serving the community with professionalism and commitment. We continuously strive for excellence and innovation, collaborating with stakeholders to build an inclusive and sustainable environment that enhances family functioning and fosters individuals to develop their full potential, while collectively making significant contributions to society.

服務時間 Service Hours

| 時間 Hours | 星期 Day | 星期一 MON | 星期二 TUE | 星期三 WED | 星期四 THU | 星期五 FRI |
|-----------------|--------|---------|---------|---------|---------|---------|
| 9:00am - 1:00pm | | ● | ● | ● | ● | |
| 2:00pm - 5:30pm | | ● | ● | ● | ● | ● |
| 5:30pm - 8:00pm | | | | | | ● |

● 所有面談均需預約 Service by appointment only

中心位置 Location Map



聯絡方法 Contact Details

香港青少年服務處 臨床心理服務
Hong Kong Children & Youth Services
Clinical Psychological Service

地址 Address : 九龍紅磡紅磡樓地下 (紅磡綜合家庭服務中心)
Hung Hom Integrated Family Service Centre
Upper G/F, Hung Fai House,
Hung Hom Estate, Kowloon

電話 Tel. No. : 2761-1106 傳真 Fax No.: 2715-4033

電子郵件 E-mail: cp@hkcsys.org.hk

網址 Website : http://cys.org.hk

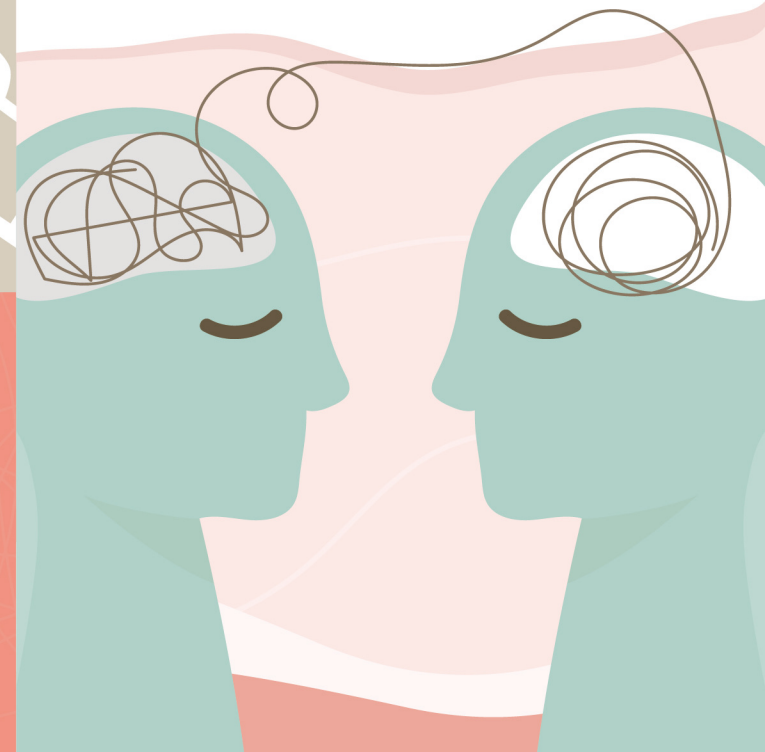


香港青少年服務處
HONG KONG CHILDREN & YOUTH SERVICES
臨床心理服務
CLINICAL PSYCHOLOGICAL SERVICE



社會福利署資助服務
Subsidised Service by the Social Welfare Department

臨床心理服務 Clinical Psychological Service



服務宗旨 PURPOSE

致力為有需要人士提供專業的心理評估及治療，從個人、家庭以至社區層面維護和倡導精神健康。

Committed to **providing professional psychological evaluation and treatment** for those in need, thereby maintaining and promoting mental health at individual, family and community levels.

服務對象 TARGET GROUP

主要接受來自本處綜合家庭服務中心、學校社會工作服務及其他服務單位的個案轉介。

Mainly case referrals from the Integrated Family Service Centre, School Social Work Service and other service units of our Agency.

服務收費 SERVICE CHARGES

免費
Free of charge

服務內容 SERVICES

為有需要人士提供智力或特殊教育需要評估，以及為受心理或行為問題困擾人士提供診斷評估，以便尋求適切服務或治療



Providing **intellectual or special educational needs assessment** for those in need; and providing **diagnostic assessment** for those who are in distress due to psychological or behavioural difficulties, in order to support due services or treatment

02



以個人、家庭或小組形式提供心理治療，從而協助有需要人士減輕症狀，促進個人成長及發展

Providing **psychotherapy** in individual, family or group setting to alleviate existing symptoms and promote positive personality growth and development

就個案處理、心理和精神健康方面向本處的社工提供個案諮詢

Providing **case consultations** to our Agency's social workers on case management and matters relating to psychology and mental health



04



舉辦以心理和精神健康為主題的專業訓練及社區教育

Organising **professional training and community education** on psychological and mental health issues

申請及退出手續 Application and Withdrawal

服務使用者可經由本處綜合家庭服務、學校社工服務或其他服務單位的社工進行轉介。服務使用者如欲退出服務，可直接向臨床心理學家提出。

Service users of the Integrated Family Service Centre, School Social Service or other service units of the Agency may approach their corresponding social workers for referral. Any service users who wish to withdraw from the service may make direct request to the clinical psychologist.