

機構簡介 INTRODUCTION

香港青少年服務處為 多元化社會服務機構

Hong Kong Children & Youth Services
is a **multi-social service agency**.

服務包括綜合家庭服務、臨床心理服務、長者社區照顧服務、兒童之家、寄養服務、綜合青少年服務中心、課餘託管服務、兒童及青少年中心、學校社會工作及支援服務、地區青少年外展社會工作服務、深宵外展服務、濫用精神藥物者輔導中心、網上青年支援服務、幼兒及家長服務、兒童復康服務及不同特別計劃。

The Agency provides social services including Integrated Family Services, Clinical Psychological Service, Community Care Services for the Elderly, Small Group Homes, Foster Care Service, Integrated Children & Youth Services Centre, After-School Care Service, Children and Youth Centre, School Social Work and Support Services, District Youth Outreaching Social Work Service, Overnight Outreaching Service, Counselling Centre for Psychotropic Substances Abusers, Cyber Youth Support Service, Children and Parents Services, Children's Rehabilitation Services and other Special Projects.



服務時間 Service Hours

時間 Hours	星期 Day	星期一 MON	星期二 TUE	星期三 WED	星期四 THU	星期五 FRI
9:00am - 1:00pm		●	●	●	●	
2:00pm - 5:30pm		●	●	●	●	●
5:30pm - 8:00pm						●

● 所有面談均需預約 Service by appointment only

中心位置 Location Map



聯絡方法 Contact Details

香港青少年服務處 臨床心理服務
Hong Kong Children & Youth Services
Clinical Psychological Service

地址 Address : 九龍紅磡紅磡樓地下 (紅磡綜合家庭服務中心)
Hung Hom Integrated Family Service Centre
Upper G/F, Hung Fai House,
Hung Hom Estate, Kowloon

電話 Tel. No. : 2761-1106 傳真 Fax No.: 2715-4033

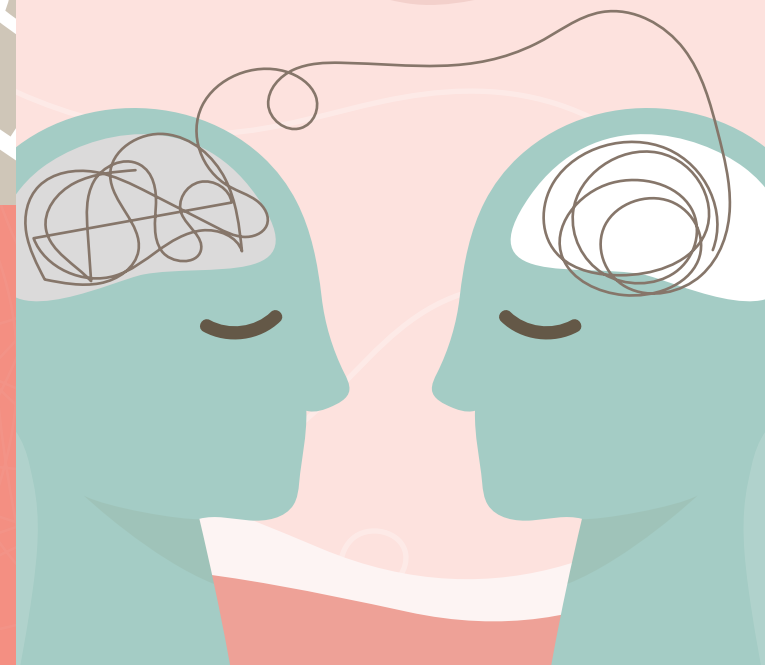
電子郵件 E-mail: cp@hkcsys.org.hk

網址 Website : <http://cys.org.hk>



香港青少年服務處
HONG KONG CHILDREN & YOUTH SERVICES

臨床心理服務 Clinical Psychological Service



服務宗旨 PURPOSE

致力為有需要人士提供專業的心理評估及治療，從個人、家庭以至社區層面維護和倡導精神健康。

Committed to **providing professional psychological evaluation and treatment** for those in need, thereby maintaining and promoting mental health at individual, family and community levels.

服務對象 TARGET GROUP

主要接受來自本處綜合家庭服務中心、學校社會工作服務及地區青少年外展社會工作服務的個案轉介。

Mainly case referrals from the Integrated Family Service Centre, School Social Work Service and District Youth Outreaching Social Work Services of our Agency.

服務收費 SERVICE CHARGES

個案服務
Casework Service/
Consultation ▶

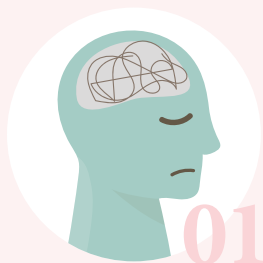
免費
Free of charge

各類型活動
Group/Programme ▶

按個別活動收費
As designated by
individual group/programme

服務內容 SERVICES

為有需要人士提供智力或特殊教育需要評估，以及為受心理或行爲問題困擾人士提供診斷評估，以便尋求適切服務或治療



01

Providing **intellectual or special educational needs assessment** for those in need; and providing **diagnostic assessment** for those who are in distress due to psychological or behavioural difficulties, in order to support due services or treatment

02



以個人、家庭或小組形式提供心理治療，從而協助有需要人士減輕症狀，促進個人成長及發展

Providing **psychotherapy** in individual, family or group setting to alleviate existing symptoms and promote positive personality growth and development

就個案處理、心理和精神健康方面向本處的社工提供個案諮詢

Providing **case consultations** to our Agency's social workers on case management and matters relating to psychology and mental health



03

04



舉辦以心理和精神健康為主題的專業訓練及社區教育

Organising **professional training and community education** on psychological and mental health issues

申請及退出手續 Application and Withdrawal

服務使用者可經由本處綜合家庭服務、學校社工服務或外展服務之社工進行轉介。服務使用者如欲退出服務，可直接向臨床心理學家提出。

Service users of the Integrated Family Service Centre, School Social Service or District Youth Outreaching Social Work Service of the Agency may approach their corresponding social workers for referral. Any service users who wish to withdraw from the service may make direct request to the clinical psychologist.